



## CNC Manufacturing and services



ROUTER – PLASMA – WATERJET



**EASYTECH MAROC**  
cnc machinery manufacturing

## Welcome to our Industrial CNC Machinery business.....

Technical expertise in CNC machinery since 2005 has enabled us to cater India, Middle east and north African market with high quality CNC Routers, Plasma, Waterjet and Aluminum milling machines. The proven track record of manufacturing and service of various kinds of CNC machines and especially special machines for more than a decade will enhance our dream to expand our market reach further.

Industrial growth and emerging market of Morocco has attracted us to choose the northwest industrial hub, we would be establishing our full-fledged manufacturing facility to maintain the same track record in our future ventures.

Our plan includes expanding our supply chain in to North and Sub Saharan Africa with all facilities of Manufacturing, Sales and Service of machinery.

ROUTER – PLASMA – WATERJET



**EASYTECH MAROC**  
cnc machinery manufacturing

## **ET 1325 – CNC ROUTER**



### **Mechanical properties**

Working area – 2440x1220 mm ( With clamping space)

Total packing size of machine - L3400xW2200xH1150 mm, Weight 1450Kg

Z- Gantry clearance –250 mm

Stepper or servo motors and drives on all axes, round orbit gear transmission

Helical 20mm rack and pinion

20mm high precision linear guides on X ,Y axes

Backlash free precision hardened and ground ball screw on Z-axis

Spindle - 3kW Water cooled Spindle

Rapid transverse speed 30 Meter/minute

Max working Speed 20 meter/Minute

Table top: Aluminum T-Slot fully covered, table, precision < 1mm

Body wet painted and Covers are powder coated.

### **Software and controller**

High speed CNC Controller

A standalone control panel with 18" TFT monitor. UPS Included.

Can be used with Art CAM execution software with 3D engraving capabilities

dxf/dwg drawings can be imported from ACAD, Corel Draw or any vector based

software directly, Tool path creation and converting in to machining files

### **Application**

The machine is suitable for Wood carving, Door manufacturing, MDF, Cement fiber, wood, acrylic, plastic, foam, Copper, Brass, Aluminum, Thermocol etc.

**ROUTER – PLASMA – WATERJET**



**EASYTECH MAROC**  
cnc machinery manufacturing

## **ET 6090 - CNC ROUTER**



### **Mechanical properties**

Working area –600X900 mm (With clamping space)

Z- Gantry clearance –250 mm

Double Motorized- Stepper/ Servo motors and drives on all axes

20mm high precision linear guides on X ,Y axes

Rack and pinion with Round orbit gear transmission

Backlash free precision hardened and ground ball screw on Z axis.

Spindle - 3kW Water cooled Spindle

Rapid transverse speed 25 Meter/minute, Max working Speed 15 meter/Minute

Body wet painted and Covers are powder coated.

### **Software and controller**

PC Based European CNC Controller

Can be used with Art CAM execution software with 3D engraving capabilities

dxf/dwg drawings can be imported from ACAD, Corel Draw or any vector based software directly

Tool path creation and converting in to machining files

### **Application**

The machine is suitable for Wood carving, Door manufacturing, MDF, Cement fiber, wood, acrylic, plastic, foam, Copper, Brass, Aluminum, Thermocol etc.

**ROUTER – PLASMA – WATERJET**



**EASYTECH MAROC**  
cnc machinery manufacturing

## **ET 1530 ATC – CNC ROUTER**



### **Mechanical properties**

Working area – 1500x3000 mm (With clamping space)

Total packing size of machine – L 4000 x W 2000 x H 1500 mm

Z- Gantry clearance –280 mm

High performance and branded Stepper or 400W servo motors and drives in all axes

Planetary gear boxes

20mm high precision linear guides on X ,Y axes, Helical rack and pinion transmission

Backlash free precision hardened and ground ball screw on Z axis.

Spindle – 4.5kW Spindle

Rapid transverse speed 35 Meter/minute

Max working Speed 20 meter/Minute

Body wet painted and Covers are powder coated.

### **Software and controller**

High speed CNC Controller

A standalone control panel with 18" TFT monitor. UPS Included.

Can be used with Art CAM execution software with 3D engraving capabilities

dxf/dwg drawings can be imported from ACAD, Corel Draw or any vector based

software directly, Tool path creation and converting in to machining files

### **Application**

Wood carving, Door manufacturing, MDF, Cement fiber, wood, acrylic, plastic,

rubber, foam, Copper, Brass, Aluminium, Thermocol etc.

**ROUTER – PLASMA – WATERJET**



**EASYTECH MAROC**  
cnc machinery manufacturing

## **ET 1760 – CNC ROUTER**



### **Mechanical properties**

Working area – 1700x6000 mm (With clamping space)

Total packing size of machine – L 8000 x W 2500 x H 2200 mm

Z- Gantry clearance –280 mm

High performance and branded 750W servo motors and drives in all axes

Automatic Tool change with 6 Tool forks

4.5kW/7.5kW HSD, Italy Spindle with ATC

Planetary gear boxes

20mm high precision linear guides on X ,Y axes, Helical rack and pinion

Backlash free precision hardened and ground ball screw on Z axis.

Vacuum table and Dust collector systems are optional

Rapid transverse speed 35 Meter/minute

Max working Speed 20 meter/Minute

Body wet painted and Covers are powder coated.

### **Software and controller**

High speed CNC Controller

A standalone control panel with 18" TFT monitor. UPS Included.

Can be used with Art CAM execution software with 3D engraving capabilities

dxf/dwg drawings can be imported from ACAD, Corel Draw or any vector based

software directly, Tool path creation and converting in to machining files

### **Application**

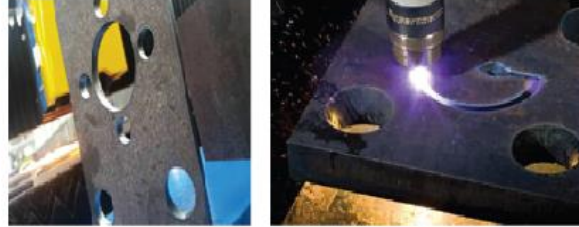
Wood carving, Door manufacturing, Composite panel grooving and cutting, MDF, Cement fiber, wood, acrylic, plastic, rubber, foam, Copper, Brass, Aluminium, Thermocoletc.

**ROUTER – PLASMA – WATERJET**



**EASYTECH MAROC**  
cnc machinery manufacturing

## **ET 1325 – CNC PLASMA**



### **Mechanical properties**

Working area – 2500x1300 mm

Plasma power source 65Amps HYPERTHERM Powermax 65

Table top with spikes for loading.

Cut off collector space under cutting table.

Hypertherm, USA/ Thermal dynamics, USA with an un interrupted Plasma source synchronized

With the arc start stop and Ampere control.

THC will enable the machine cut on an un even surface of steel

Power Supply : 380V, 50Hz, 3 Phase

Required power :

Plasma Source : 18 kVA ( Equivalent to 14 kW)

Machine power : 2kW

Air Supply : 8 bars air pressure, 500Ltrs Capacity Compressor with drier is advised.

FEEDLINE IV Abrasive metering system

ABRALINE III abrasive storage and supply system

### **Software and controller**

High speed CNC Controller

A standalone control panel with 18" TFT monitor. UPS Included.

Can be used with Art CAM execution software with 3D engraving capabilities

dxg/dwg drawings can be imported from ACAD, Corel Draw or any vector based software directly

Tool path creation and converting in to machining files

### **Application**

Cutting thick steel and Stainless steel in different shapes. Applicable for only ferrous material

**ROUTER – PLASMA – WATERJET**



## **ET WJ 1530 – CNC WATERJE**



## **Mechanical properties**

Waterjet Table Specifications

KMT Waterjet Systems, USA

JETLINE- JL-I-50 – 3800 bar

The JETLINE high pressure pump combines all the advantages of KMT waterjet systems developed specifically to meet the requirements of Asian market, the JETLINE high pressure pump meets all the expectation regarding cost-efficient Waterjet cutting.

Cutting Area 2000 x 3000 mm.

Z clearance - 250 mm.

Servo motor and gear box in X1, X2, Y and Z axes.

ACTIVE AUTOLINE II Abrasive Cutting head

FEEDLINE IV Abrasive metering system

ABRALINE III abrasive storage and supply system

## **Software and controller**

Waterjet cutting system compatible Software and controller

## **Application**

To cut all typed of metal, Marble, Granite, Stone and all material which can be cut wet.





**EASYTECH MAROC**  
cnc machinery manufacturing

## Our Products

Reckoned as one of the emerging hi-tech companies in the industry of CNC machinery, we have achieved a flawless manufacturing process of CNC Router/Engravers, CNC Plasma Cutting machines, CNC Waterjet cutting machines and CNC Aluminium profile cutting machines.

We offer these products to our clientele of the industry with competitive price with a fast and definite time span

Ever since we have developed latest technology for special purpose machines (SPM) targeting multinational large industries for their special applications.

We cater our machines to the following industries

- 1) Aerospace industry
- 2) Defence equipment manufacturing
- 3) Marine and ship building industry
- 4) Heavy steel manufacturing
- 5) Interior design
- 6) Advertising and sign making industry
- 7) Wood and joinery and pattern or die making industry
- 8) Jewellery die making industry
- 9) Textile machinery manufacturing industry
- 10) Industrial product manufacturing

ROUTER – PLASMA – WATERJET



# EASYTECH MAROC

cnc machinery manufacturing

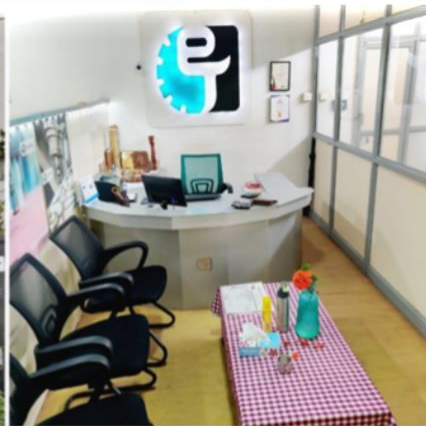


ROUTER - PLASMA - WATERJE



# EASYTECH MAROC

cnc machinery manufacturing



ROUTER – PLASMA – WATERJET



**“Easytech CNC Machines are characterized as versatile,  
reliable and more over extremely good value for money.  
Our products are designed to incorporate tried-and-tested  
technologies and canalso be integrated with existing systems**

**and softwares to ensure smooth workability”**

Easytech CNC Machinery Manufacturing  
70, Nehru Street, Kalapatti.P.O.  
Coimbatore-48, INDIA  
+91– 422-293 1111/+91-978 964 1811  
cnceasytech@gmail.com

[www.easytechcnc.com](http://www.easytechcnc.com) , [www.cnceasytech.in](http://www.cnceasytech.in)

Easytech Maroc  
RDC, Lotissement El Mansour 1005, 50000, Méknes, Maroc  
+212-661 69 46 80/ +89-03 43 18 11  
easytechmaroc.a@gmail.com

[www.easytechcnc.com](http://www.easytechcnc.com), [www.cnceasytech.in](http://www.cnceasytech.in)

**ROUTER – PLASMA – WATERJET**